



Daily Technical Trader - Qatar

September 09, 2025



QE Index Summary

	8 Sep 2025	7 Sep 2025	Chg
Index	11,124	11,131	-0.06%
Value QR (mn)	301	272	10.66%
Trades	23,238	12,708	82.86%
Volume (mn)	97	118	-17.80%
Stocks Traded	52	52	0.00%
Gainers	18	31	-41.94%
Losers	30	12	150.00%
Unchanged	4	9	-55.56%

Source: Qatar Stock Exchange

Weekly Market Recommendations:

Time Frame	Trend	Current Level	Target	Support	Resistance
Short-term (07Sep -11Sep)	↑	11,124.83	11,700	11,040	11,750
Medium-term (01Sep- 01Oct)	↑	11,124.83	12,250	10,850	12,300

Weekly Company Recommendations:

Company Name	Current Price	View	Time Frame	Support	Resistance
MCCS	QR6.067	Positive	Short-term (07Sep -11Sep)	QR5.851	QR6.382
VFQS	QR2.449	Positive	Medium-term (01Sep- 01Oct)	QR2.336	QR2.625

Daily Company Recommendations:

Company Name	Current Price	View	Time Frame	Support	Resistance
BRES	QR2.748	Positive	1 Day	QR2.735	QR2.766
ERES	QR1.219	Positive	1 Day	QR1.206	QR1.230
MEZA	QR3.369	Positive	1 Day	QR3.352	QR3.404
QGTS	QR4.800	Positive	1 Day	QR4.781	QR4.837

List of Stocks Close to Technical Levels

Companies Closest to Resistance				
Company	Ticker	Mcap (QRmn)	Price	Resistance
Qatar Islamic Bank	QIBK	57,739.0	24.10	24.13
Qatar Aluminium Manufacturing Company	QAMC	7,985.7	1.42	1.45
Mesaieed Petrochemical Holding	MPHC	16,778.0	1.33	1.35
Ezdan Holding Group	ERES	32,353.9	1.22	1.25
Barwa Real Estate Company	BRES	10,745.9	2.75	2.81

Companies with RSI over 70 (Overbought)				
Company	Ticker	Mcap (QRmn)	Price	RSI
Qatar Oman Investment Co	QOIS	214.9	0.67	69.00
Medicare Group	MCGS	1,781.9	6.26	68.63
QLM Life & Medical Insurance Company	QLMI	822.8	2.30	67.96
Baladna	BLDN	3,097.3	1.52	63.95
Qatar German Co for Medical Devices	QGMD	198.8	1.70	63.53

Companies Closest to Support				
Company	Ticker	Mcap (QRmn)	Price	Support
Ezdan Holding Group	ERES	32,353.9	1.22	1.20
Masraf Al Rayan	MARK	22,481.5	2.41	2.40
Barwa Real Estate Company	BRES	10,745.9	2.75	2.72
Mesaieed Petrochemical Holding	MPHC	16,778.0	1.33	1.30
Qatar Insurance Company	QATI	6,666.0	2.02	2.00

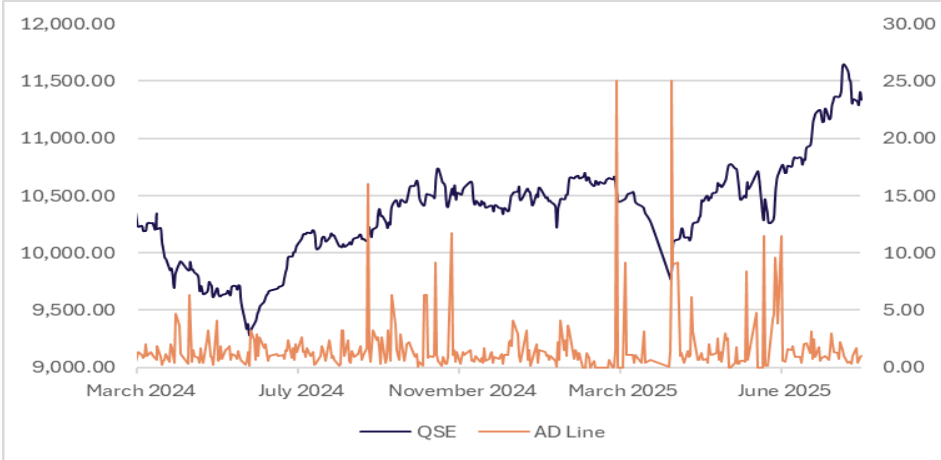
Companies with RSI below 30 (Oversold)				
Company	Ticker	Mcap (QRmn)	Price	RSI
Mekdam Holding group	MKDM	426.6	2.63	15.52
Qatar National Cement	QNCD	2,194.8	3.34	20.00
Gulf Warehousing Co	GWCS	1,573.5	2.68	28.43
Doha Insurance Co	DOHI	1,282.7	2.53	31.32
United Development Co	UDCD	3,599.1	1.01	32.56

Source: Refinitiv, QNBFS Research

Outlook

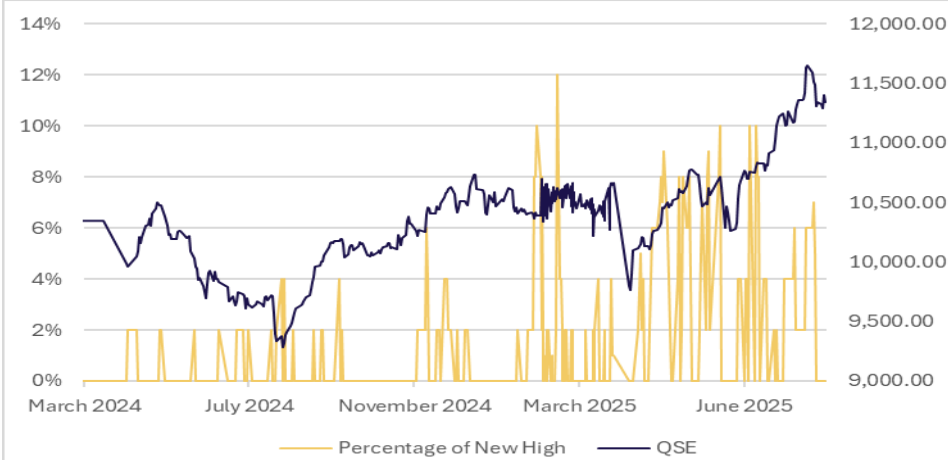
The QE Index marginally declined around 7 points on Monday. The RSI line continue to be below the 50 zone. Meanwhile, the index strong support is seen around 11,040, while resistance is seen around the 11,750 levels.

Advance/Decline Line



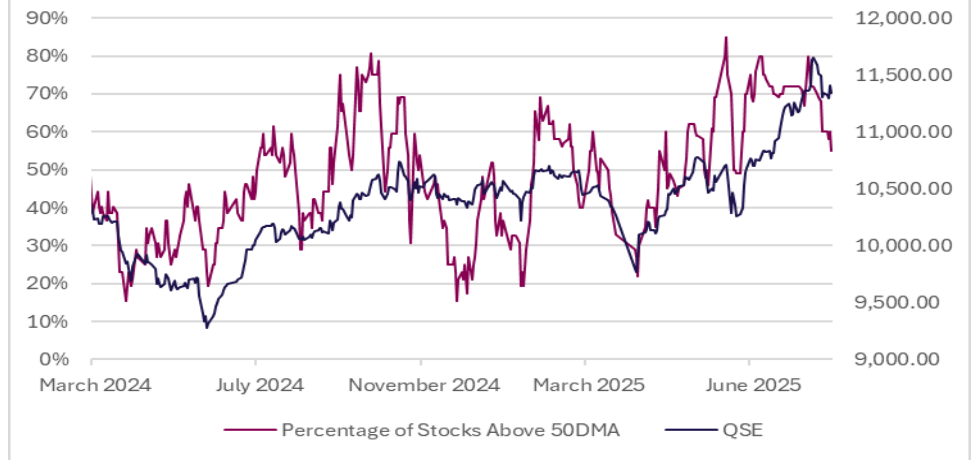
Source: Refinitiv, QNBFS Research

Percentage of New Highs to Total Market



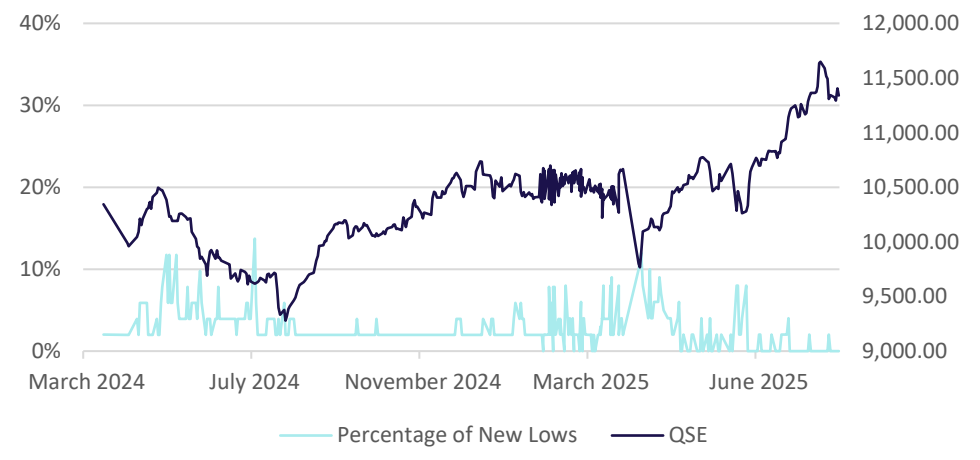
Source: Refinitiv, QNBFS Research

Percentage of Stocks Above 50-day Moving Average



Source: Refinitiv, QNBFS Research

Percentage of New Lows to Total Market



Source: Refinitiv, QNBFS Research

Daily Company Recommendations

BRES (Barwa)



The stock on the daily chart attempted a rebound after building a base to test the mid-bollinger band yesterday, and can again repeat the same process, indicating a possibility of a bounce. The RSI line is moving up towards the 50 zone. Traders can buy the stock above QR2.752 for momentum to pick up, with a stop loss at QR2.735 for a target of QR2.766.

Source: Bloomberg, QNBFS Research

ERES (Ezdan Holding)



On the daily chart, the stock extended its gains and is gradually moving up, showing signs of the upside to continue. The RSI line is in the buy zone. Traders can maintain buy on the stock at the current price and add new positions above QR1.220, with a new stop loss at QR1.206 for a revised target of QR1.230.

Source: Bloomberg, QNBFS Research

Weekly Company Recommendations

MCCS (Mannai Corp.)



On the weekly charts, the stock after witnessing a correction over the past few weeks managed to reclaim its 200-DMA and closed above it with a bullish candle, showing signs of buying interest coming back in the stock. Moreover, the stock is now trading above all the moving averages, indicating the upside is intact. The weekly RSI is also in the buying zone. Traders can consider buying the stock at the current price or on declines, with a stop loss of QR5.851 for a potential target of QR6.382.

Source: Bloomberg, QNBFS Research

VFQS (Vodafone Qatar)



On the monthly charts, the stock has been gradually moving higher over the past few months and managed to close near the upper end of the bollinger band after a witnessing consolidation in earlier months, showing signs of the upside momentum to pick up. Moreover, all the moving averages are pointing higher, indicating a rally going ahead. The RSI line is in the bullish zone. Investors could consider buying the stock at the current levels or on declines, with a stop loss of QR2.336 for a potential target of QR2.625.

Source: Bloomberg, QNBFS Research

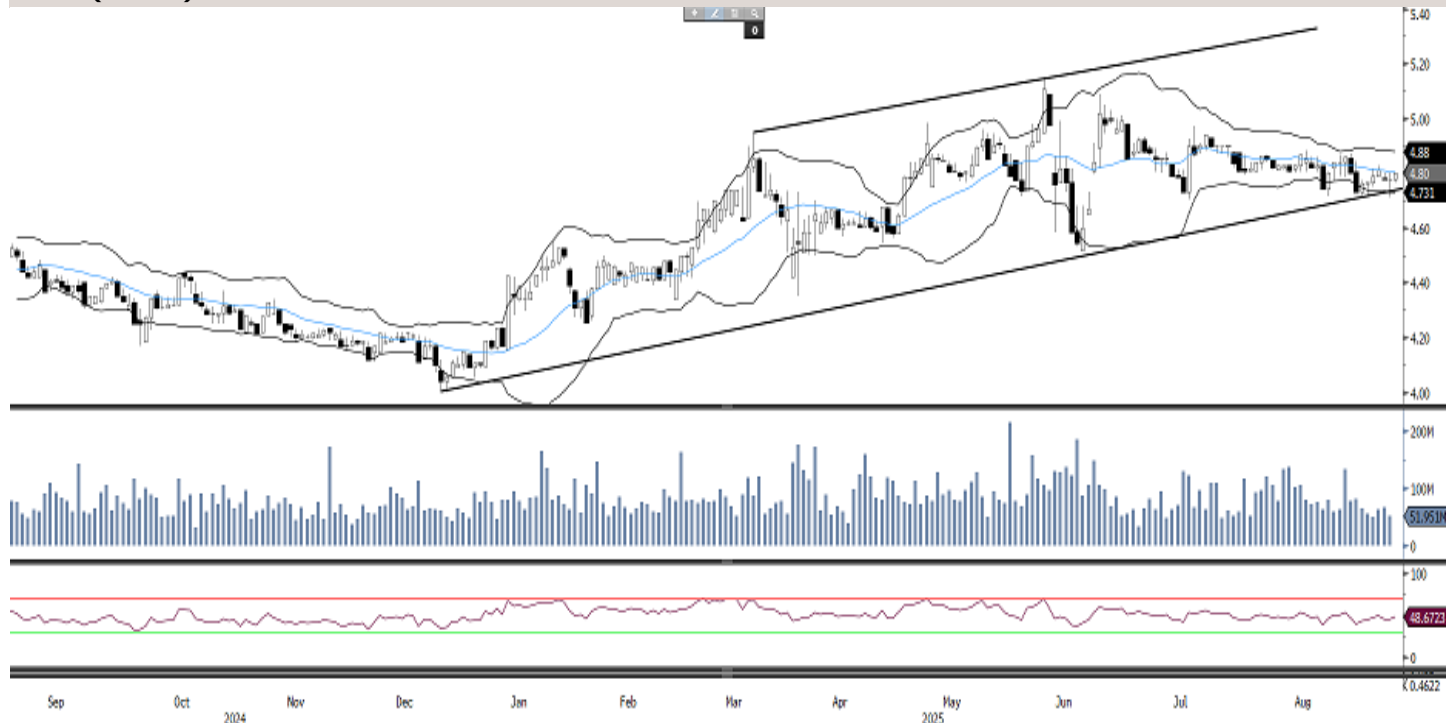
MEZA (Meeza QSTP) - Short Term



The stock on the daily chart has shown a rebound after witnessing correction over the past few days and managed to close above the mid-bollinger band, indicating the rebound to continue. The RSI line is in the bullish zone. Traders can buy the stock at the current price or on declines, with a stop loss of QR3.352 for a target of QR3.404.

Source: Bloomberg, QNBFS Research

QGTS (Nakilat) - Medium Term



On the daily chart, QGTS, has been respecting the lower end of the channel trendline support over the past few days, and is on the verge of moving above the mid-bollinger band, showing signs of a further bounce back. The RSI line is moving up towards the 50 zone. Traders can buy the stock above QR4.806 for momentum to pick up, with a stop loss of QR4.781, for a target of QR4.837.

Source: Bloomberg, QNBFS Research

Contacts

QNB Financial Services Co. W.L.L.

Contact Center: (+974)4476 6666

info@qnbfs.com.qa

Doha, Qatar

Shahan Keushgerian

Senior Research Analyst

shahan.keushgerian@qnbfs.com.qa

Saugata Sarkar, CFA, CAIA

Head of Research

saugata.sarkar@qnbfs.com.qa

Phibion Makuwerere, CFA

Senior Research Analyst

phibion.makuwerere@qnbfs.com.qa

Dana Saif Al Sowaidi

Research Analyst

dana.alsowaidi@qnbfs.com.qa

Disclaimer and Copyright Notice: This publication has been prepared by QNB Financial Services Co. W.L.L. ("QNBFS") a wholly-owned subsidiary of Qatar National Bank (Q.P.S.C.). QNBFS is regulated by the Qatar Financial Markets Authority and the Qatar Exchange. Qatar National Bank (Q.P.S.C.) is regulated by the Qatar Central Bank. This publication expresses the views and opinions of QNBFS at a given time only. It is not an offer, promotion or recommendation to buy or sell securities or other investments, nor is it intended to constitute legal, tax, accounting, or financial advice. QNBFS accepts no liability whatsoever for any direct or indirect losses arising from use of this report. Any investment decision should depend on the individual circumstances of the investor and be based on specifically engaged investment advice. We therefore strongly advise potential investors to seek independent professional advice before making any investment decision. Although the information in this report has been obtained from sources that QNBFS believes to be reliable, we have not independently verified such information and it may not be accurate or complete. QNBFS does not make any representations or warranties as to the accuracy and completeness of the information it may contain, and declines any liability in that respect. For reports dealing with Technical Analysis, expressed opinions and/or recommendations may be different or contrary to the opinions/recommendations of QNBFS Fundamental Research as a result of depending solely on the historical technical data (price and volume). QNBFS reserves the right to amend the views and opinions expressed in this publication at any time. It may also express viewpoints or make investment decisions that differ significantly from, or even contradict, the views and opinions included in this report. This report may not be reproduced in whole or in part without permission from QNBFS.

COPYRIGHT: No part of this document may be reproduced without the explicit written permission of QNBFS.